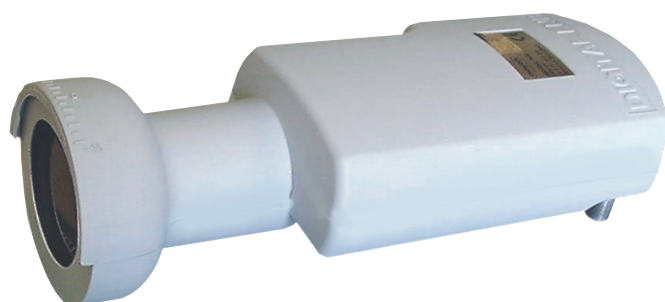


Universal Twin LNB

2 Fully Switched Output Universal LNB



global invacom
completing the picture



TWH - 031



TWF - 031

The Twin Universal LNB provides 2 fully switched outputs, ideal for weak signal areas. The **TWH** has a 40mm diameter collar to suit standard offset dishes, whilst the **TWF** (C120 flange) is for use with various types of feed horn, commonly fitted to prime focus dishes. Both LNBs are supplied with gaiters to create a weather-proof seal on the cable connections.

Specification

1. Input Frequency	
Low Band	10.7 - 11.7 GHz
High Band	11.7 - 12.75 GHz
2. Output Frequency	
Low Band	950 - 2150 MHz
High Band	950 - 2150 MHz
3. Noise Figure	
TWF - 031, TWH - 031, TWH-051	0.3 dB typ 0.5 dB typ
4. Gain	50 - 60 dB
5. Gain Ripple	
26 MHz bandwidth	<+/- 0.5 dB
Low Band	<5 dB typ
High Band	<5 dB typ
6. Local Oscillator Frequency	
Low Band	9.75 GHz
High Band	10.6 GHz
7. Local Oscillator Phase Noise (typ)	
1 kHz	-65 dBc/Hz
10 kHz	-95 dBc/Hz
100 kHz	-110 dBc/Hz
8. Local Oscillator Stability (including setting, aging and temperature drift)	+/- 1 MHz typ +/- 5 MHz max
9. Current Consumption	port 1 only 170mA typ both ports 200mA typ

10. Image Rejection	>40 dB
11. Isolation	
Cross Polar Isolation	>30 dB
High to Low Band Isolation	>30 dB
12. Two-tone 3rd Order Interception Point (output)	>15 dB
13. Output Connector	2 x Female F-type
Impedance	75 Ohm
Return Loss	>10 dB
14. Operating Temperature Range	-40°C to +70°C
Storage Temperature Range	-40°C to +70°C
15. Band Polarization Selection	
Signals applied to F-type connector	
Vertical Polarization Selection	11.5V to 14V
Horizontal Polarization Selection	15.5V to 19V
High Band Selection (22kHz tone)	
Frequency (square wave controlled rise/fall transition time)	18 kHz to 26 kHz
Level	0.4 Vpp to 0.8 Vpp
Transition time	5µS to 15µS
Duty Cycle	40% to 60%
Load Impedance at 22kHz	>70 Ohm
Low Band Selection	No tone
16. In band Spurious (primarily 1700 MHz)	<-65 dBm
17. Out of Band Spurious (primarily 850 MHz)	<-45 dBm
18. Output Gain Difference (between the outputs in 26MHz Bandwidth)	<6 dB
19. TWF - 031 Interface	18.5mm Ø Waveguide, C120 Flange
TWH - 031, TWH-051	Off-set Parabola Matched, Frequency Compensated Feed Horn, 40mm Dish Clamp